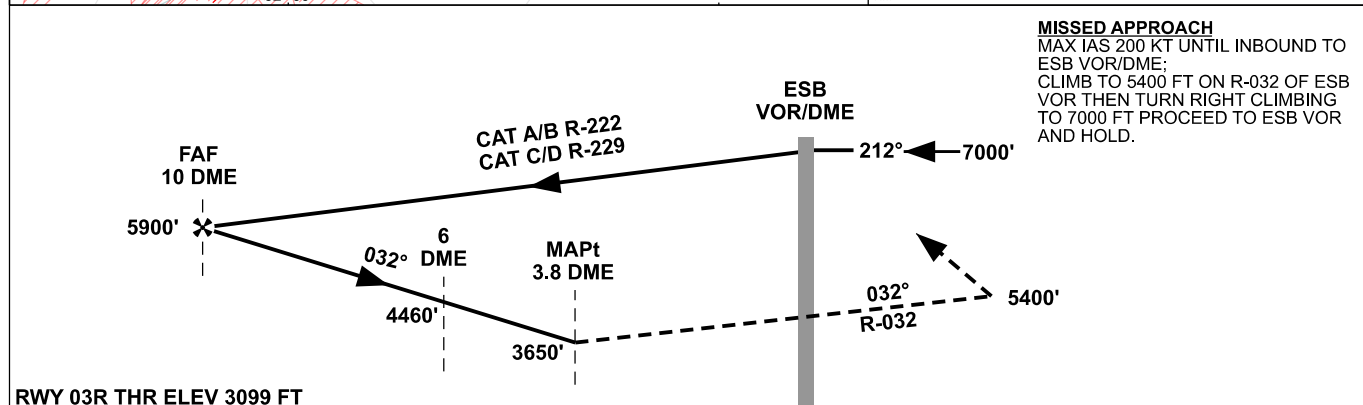
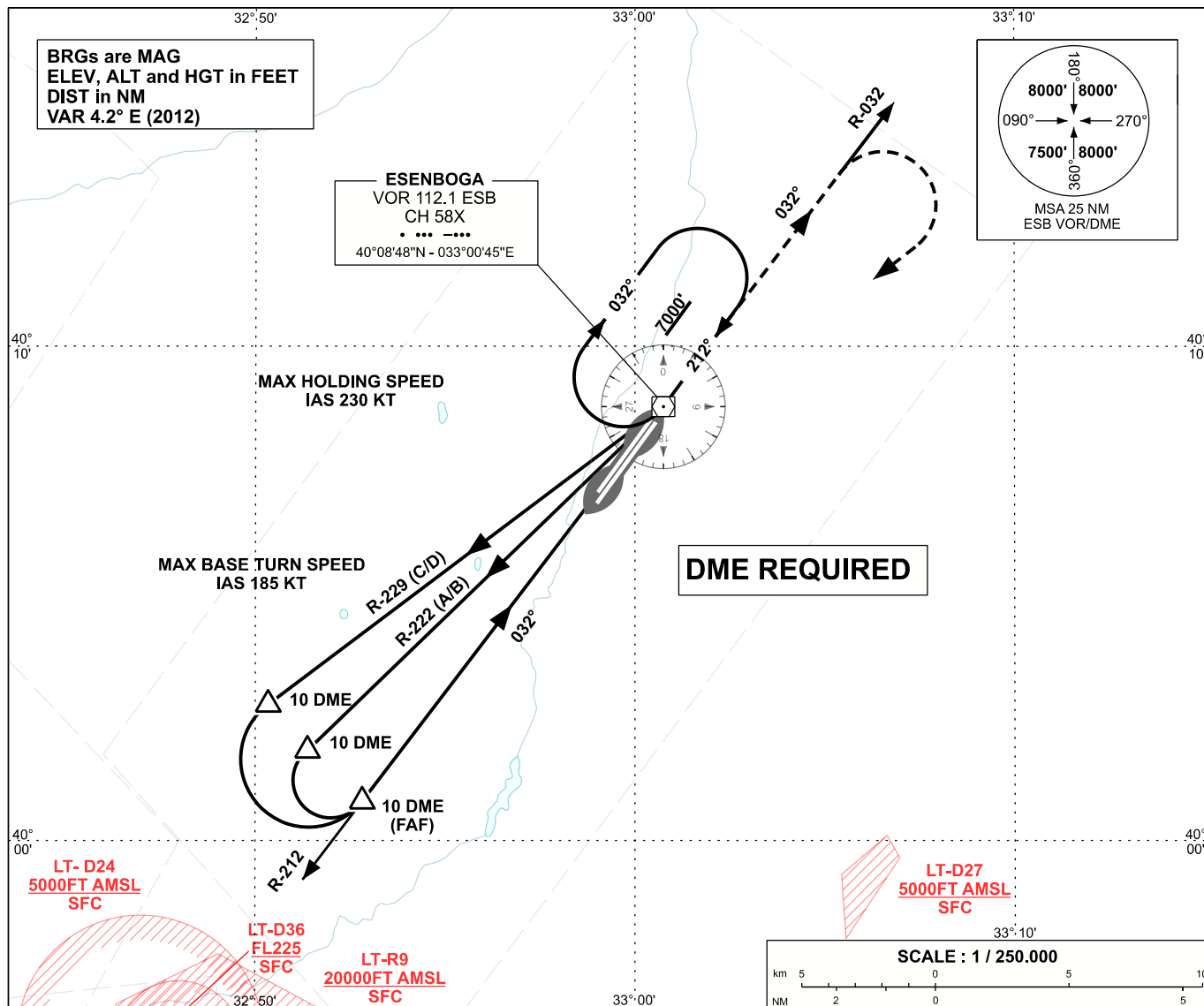


ANKARA/ESENBOĞA  
VOR Z  
RWY 03R

APP	119.6 - 119.1	AD ELEV	3127 FT
TWR	118.1 - 257.8	TRANSITION ALTITUDE	10 000 FT
ATIS	123.6		

INSTRUMENT  
APPROACH  
CHART - ICAO



OCA (H)	A	B	C	D
Straight-in Approach	3650' ( 551' )			
Circling	3800' ( 673' )		4650' ( 1523' )	